



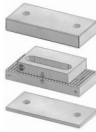
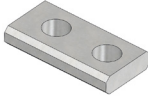





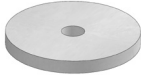
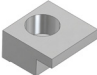



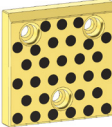
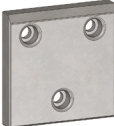






Die Components Normalien Componenti



OMCR[®]
STANDARD DIE COMPONENTS

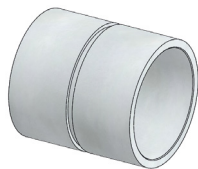
| | | | | |
|---|---|---|---|--|
| B2 2101 016 | B2 2305 016 | B2 2305 017 | B2 2305 022 | B2 2305 022 |
|  |  |  |  |  |
| Bush for lifting pin Buchse für Tragbolzen Boccola per perno di sollevamento | Gage Einweiser Riferimento | Gage hardened Einweiser gehärtet Riferimento indurito | Gage for sensor Einweiser für Teillagekontrolle Riferimento per sensore | Gage for sensor Einweiser für Teillagekontrolle Riferimento per sensore |
| 146 | 146 | 147 | 147 | 148 |
| B2 2305 024 | B2 2305 024 | B2 2506 012 | B2 2604 012 | B2 2615 002 |
|  |  |  |  |  |
| Gage for sensor Einweiser für Teillagekontrolle Riferimento per sensore | Gage for sensor Einweiser für Teillagekontrolle Riferimento per sensore | Hook for chute Haken Gancio | Air pin Druckbolzen Candela | Air pin Druckbolzen Candela |
| 148 | 149 | 149 | 150 | 151 |
| B2 2625 011 | B2 2625 011 | B2 2705 011 | B2 2705 011 | B2 2705 011 |
|  |  |  |  |  |
| Retainer Sicherungsplatte Piastrina | Retainer Sicherungsplatte Piastrina | Stop block Abstandsblock Distanziale | Stop block Abstandsblock Distanziale | Shim Ausgleichs Scheib Spessore |
| 152 | 152 | 153 | 153 | 153 |
| B2 2708 011 | B2 2709 011 | B2 2709 020 | B2 2715 011 | B2 2715 011 |
|  |  |  |  |  |
| Spacer Distanzstück Distanziale | Backing plate Distanzkappe Reazione per cilindro | Backing plate Distanzkappe Reazione per cilindro | Locating cone Kegeldistanz Cono di centraggio | Shim Ausgleichs Scheib Spessore |
| 154 | 155 | 155 | 156 | 156 |

| | | | | |
|---|---|---|---|---|
| B2 2715 014 | B2 2715 014 | B2 2717 012a -013a | B2 2904 009 | B2 2904 011 |
|  |  |  |  |  |
| Locating cone Kegeldistanz Cono di centraggio | Shim Ausgleichs Scheib Spessore | Spacer plate toothed Distanzplatte gezahnt Tassello di compensazione | Retainer Sicherungsplatte Piastrina | Retaining bolt Sicherungsbolzen Perno di bloccaggio |
| 157 | 157 | 158 | 158 | 159 |
| B2 2920 001 | B2 2920 001 | B2 2920 001 | B2 2920 001 | B2 2920 003 |
|  |  |  |  |  |
| Guide post Führungssäule Colonna guida | Guide post Führungssäule Colonna guida | Guide post Führungssäule Colonna guida | Guide post Führungssäule Colonna guida | Washer Federscheibe Rondella per colonne |
| 160 | 161 | 162 | 163 | 164 |
| B2 2920 003 | B2 2933 001 | B2 2933 001 | B2 2933 001 | B2 2960 012 |
|  |  |  |  |  |
| Toe clamp Haltestück Ritegno per boccola | Guide bush DIN 9834 Führungsbuchse DIN 9834 Boccola DIN 9834 | Guide bush Führungsbuchse Boccola | Guide bush Führungsbuchse Boccola | Wear plate VDI 3357 Gleitplatte VDI 3357 Piastra guida VDI 3357 |
| 164 | 165 | 165 | 166 | 167 |
| B2 2960 012 | B2 2960 012 | B2 2960 012 | B2 2969 011 | B2 2975 011 |
|  |  |  |  |  |
| Wear plate VDI 3357 Gleitplatte VDI 3357 Piastra guida VDI 3357 | Wear plate VDI 3357 Gleitplatte VDI 3357 Piastra guida VDI 3357 | Wear plate VDI 3357 Gleitplatte VDI 3357 Piastra guida VDI 3357 | Gib VDI 3387 Führungslasche VDI 3387 Guida VDI 3387 | Guide bar VDI 3357 Führungsleiste VDI 3357 Lardone VDI 3357 |
| 168 | 169 | 170 | 171 | 171 |

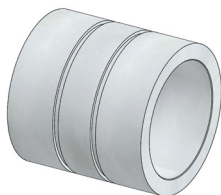
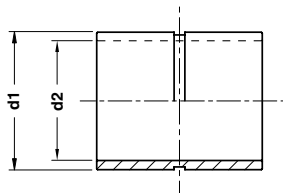
| | | | | |
|---|---|--|--|--|
| B2 2978 021 | B2 2978 021 | B2 2978 021 | B2 2978 21 | B2 2978 023 |
| | | | | |
| "V" driver VDI 3357 Prismenführung VDI 3357 Guida a "V" VDI 3357 | "V" driver VDI 3357 Prismenführung VDI 3357 Guida a "V" VDI 3357 | "V" driver VDI 3357 Prismenführung VDI 3357 Guida a "V" VDI 3357 | "V" driver VDI 3357 Prismenführung VDI 3357 Guida a "V" VDI 3357 | Distance plate for "V" driver Höhenausgleich für Prismenführung Distanziale per guida a "V" |
| 172 | 172 | 173 | 173 | 174 |
| B2 3001 021 | B2 3001 021 | B2 3001 021 | B2 3001 021 | B2 3001 021 |
| | | | | |
| Slide stop block Schieberranschlag Arresto slitta | Slide stop block Schieberranschlag Arresto slitta | Anti-rebound elastomer Dämpfungselement Ammortizzatore antirimbalzo | Slide stop block Schieberranschlag Arresto slitta | Anti-rebound elastomer Dämpfungselement Ammortizzatore antirimbalzo |
| 174 | 175 | 175 | 176 | 176 |
| B2 3302 021 | B2 3302 021 | B2 3602 003 | B2 3602 003 | B2 3765 001 |
| | | | | |
| Coupling plate Befestigungsplatte Staffa di reazione | Coupling nut Kupplungsmutter Aggancio staffa | Shim Prägestempel Spessore | Visual locator setting punch Stempel f. entgasungsnoppen Punzone di visualizzazione | Key Passfeder Chiavetta |
| 177 | 177 | 178 | 178 | 179 |
| B2 3925 011 | B2 4010 001 | B2 4068 001 | B2 4068 002 | B2 4069 001 |
| | | | | |
| Elastomer spring pin Aufnahmebolzen Perno per molle | Backing plate Distanzkappe Reazione per cilindro | Locating pin Zentrierbolzen Centraggio | Locating pin Zentrierbolzen Centraggio | Key Passfeder Chiavetta |
| 179 | 180 | 180 | 181 | 181 |

| | | | | |
|--|---|---|---|--|
| <p>B2 5601 011</p>  <p>Lifting pin Tragbolzen mit Fallringsicherung Perno di sollevamento</p> <p>182</p> | <p>B2 5602 011</p>  <p>Lifting bracket with rope stop safety Tragzapfen mit Seilsicherung Staffa di sollevamento con sicurezza fermafune</p> <p>183</p> | <p>B2 5602 012</p>  <p>Lifting pin VDI 3366 Tragschraube VDI 3366 Perno di sollevamento VDI 3366</p> <p>184</p> | <p>B2 5605 011</p>  <p>Lifting bracket with pin and locating pins Tragwange mit Tragbolzen und Zentrierbolzen Staffa di sollevamento completa di perno e centraggi</p> <p>185</p> | <p>B2 5605 011a</p>  <p>Lifting bracket with pin and keys Tragwange mit Tragbolzen und Passfeder Staffa di sollevamento completa di perno e chivette</p> <p>186</p> |
| <p>B2 5605 012</p>  <p>Lifting pin Tragbolzen mit Fallringsicherung Perno di sollevamento</p> <p>187</p> | <p>B2 5702 012</p>  <p>Pad retainer pin Steckbolzen Perno di arresto</p> <p>188</p> | <p>B2 5702 012</p>  <p>Pad retainer pin Steckbolzen Perno di arresto</p> <p>188</p> | <p>B2 6201 011</p>  <p>Washer Scheibe Rondella</p> <p>189</p> | <p>B2 6201 012</p>  <p>Spacer tube Distanzbuchse Tubo distanziale</p> <p>189</p> |
| <p>B2 6202 001</p>  <p>Buffer Stossdämpfer Ammortizzatore</p> <p>190</p> | <p>B2 6202 001</p>  <p>Washer Scheibe Rondella</p> <p>190</p> | <p>B2 6202 001</p>  <p>Washer Scheibe Rondella</p> <p>190</p> | <p>B2 6204 012</p>  <p>Shock absorber Halteelement Ammortizzatore</p> <p>191</p> | |

BUSH FOR LIFTING PIN - BUCHSE FÜR TRAGBOLZEN - BOCCOLA PER PERNO DI SOLLEVAMENTO



FORM A



FORM B

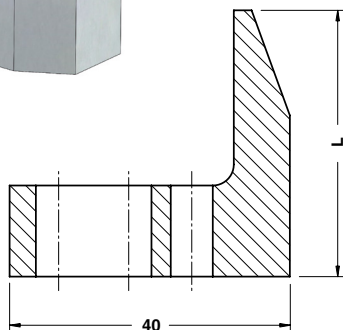
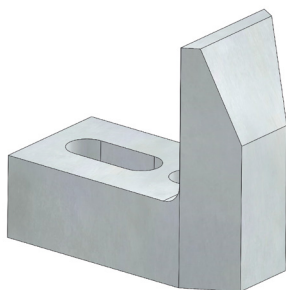
Notes

Material: Si35

STOCK

| ORDER EXAMPLE | BMW CODE | | |
|---------------|-----------|----|------|
| | 2 173 600 | | |
| BMW CODE | d1 | d2 | FORM |
| 2 173 599 | 44 | 34 | A |
| 2 173 600 | 52 | 42 | A |
| 2 173 601 | 62 | 52 | A |
| 2 173 602 | 75 | 65 | A |
| 2 173 603 | 100 | 78 | B |
| 2 173 604 | 105 | 78 | B |

GAGE - EINWEISER - RIFERIMENTO



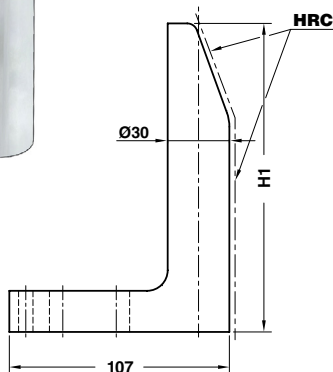
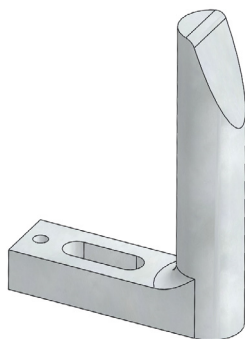
Notes

Material: 21MnCr5 - HRC: 58÷60

STOCK

| ORDER EXAMPLE | BMW CODE | |
|---------------|-----------|--|
| | 2 175 120 | |
| BMW CODE | L | |
| 2 175 119 | 28 | |
| 2 175 120 | 38 | |
| 2 175 121 | 48 | |
| 5 792 350 | 68 | |
| 5 792 351 | 88 | |

GAGE HARDENED - EINWEISER GEHÄRTET - RIFERIMENTO INDURITO



Notes

Material: CK60 - **HRC:** 58+60

STOCK



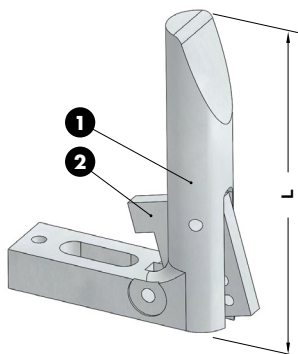
BMW CODE

2 173 836

| BMW CODE | H1 |
|-----------|-----|
| 2 173 835 | 65 |
| 2 173 836 | 90 |
| 2 173 837 | 120 |
| 2 173 838 | 150 |
| 2 173 839 | 180 |
| 2 175 927 | 210 |
| 2 173 840 | 250 |
| 2 175 127 | 300 |
| 2 175 128 | 350 |

Standard BMW

GAGE FOR SENSOR - EINWEISER FÜR TEILLAGEKONTROLLE - RIFERIMENTO PER SENSORE



STOCK

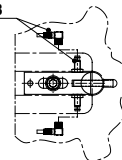


Notes

- 1** Material: CK60
- 2** Material: Si37 - **HRC:** 50+55

Application example

B2 3503 23

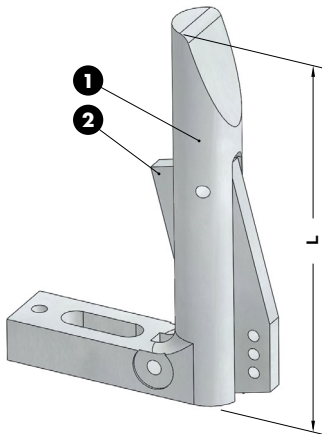


BMW CODE

2 173 842

| BMW CODE | L | Sensor |
|-----------|-----|--------------|
| 2 173 841 | 120 | included |
| 2 173 842 | 120 | not included |
| 2 173 843 | 150 | included |
| 2 173 844 | 150 | not included |

GAGE FOR SENSOR - EINWEISER FÜR TEILLAGEKONTROLLE - RIFERIMENTO PER SENSORE



STOCK

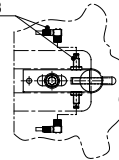


Notes

- 1 Material:** CK60
- 2 Material:** Si37 - HRC: 50±5

Application example

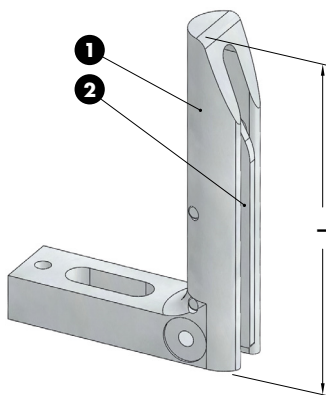
B2 3503 23



BMW CODE
2 173 846

| BMW CODE | L | Sensor |
|-----------|-----|--------------|
| 2 173 845 | 180 | included |
| 2 173 846 | 180 | not included |
| 2 173 847 | 250 | included |
| 2 173 848 | 250 | not included |

GAGE FOR SENSOR - EINWEISER FÜR TEILLAGEKONTROLLE - RIFERIMENTO PER SENSORE



STOCK



Notes

- 1 Material:** CK60
- 2 Material:** Si37 - HRC: 58±60

Only for replacement
Nur für Reparatur
Solo per riparazione

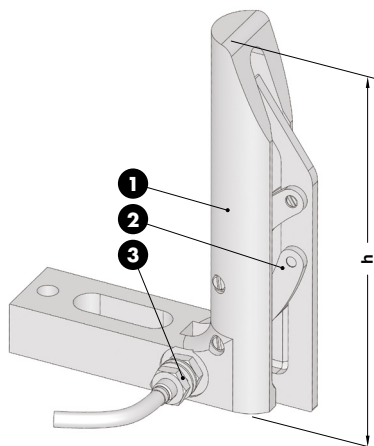


BMW CODE
2 173 850

| BMW CODE | L |
|------------|-----|
| 2 173 849 | 120 |
| 2 173 850 | 150 |
| 2 173 851 | 180 |
| 2 173 852 | 250 |
| 2 173 853* | 250 |

* With short plate
Mit Kurzschild
Con piastra corta

GAGE WITH SENSOR - EINWEISER MIT TEILLAGEKONTROLLE - RIFERIMENTO CON SENSORE



Notes



1 Material: CK60 - HRC: 58÷60

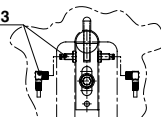


2 Material: 16MnCr5 - HRC: 58÷60

3 Proximity sensor with cable coupling

Application example

B2 3503 23

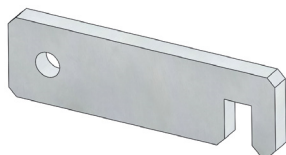


BMW CODE
2 175 999

| BMW CODE | h |
|-----------|-----|
| 2 175 998 | 120 |
| 2 175 999 | 150 |
| 2 176 000 | 180 |
| 2 176 001 | 250 |

Standard BMW

HOOK FOR CHUTE - HAKEN - GANCIO



Notes

Material: Si37

STOCK



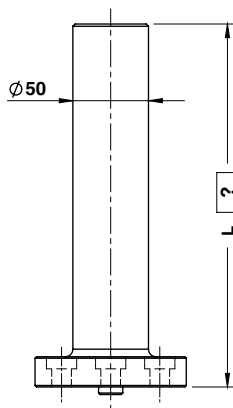
BMW CODE
2 168 287

| BMW CODE |
|-----------|
| 2 168 287 |

AIR PIN - DRUCKBOLZEN - CANDELA



FORM A



FORM B



FORM C



85 < L ≤ 500 mm

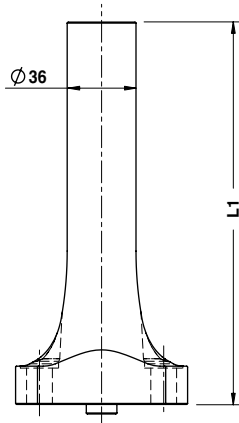
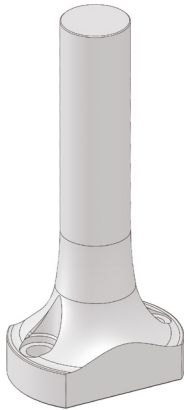
Notes

Material: CK45 - 800±1000 N/mm²



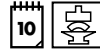
| | | |
|--------------------------|-----------------|--------------|
| ORDER EXAMPLE | BMW CODE | L=355 |
| | 6 293 157 | 355 |
| BMW CODE | | FORM |
| 6 293 156 | | A |
| 6 293 157 | | B |
| 6 293 158 | | C |

AIR PIN - DRUCKBOLZEN - CANDELA



Notes

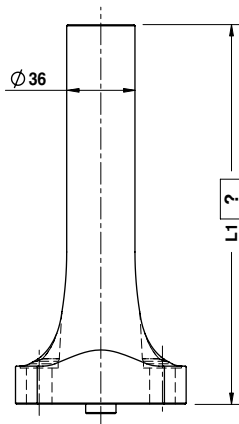
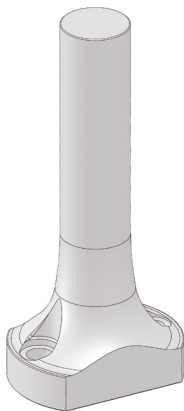
Material: 42CrMo4
800±1000 N/mm²



| | | |
|----------------------|-----------------|--|
| ORDER EXAMPLE | BMW CODE | |
| | 2 175 218 | |
| BMW CODE | L1 | |
| 2 175 217 | 150 | |
| 2 175 218 | 175 | |
| 2 175 219 | 200 | |
| 2 175 220 | 225 | |
| 2 175 221 | 250 | |

Standard BMW

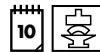
AIR PIN - DRUCKBOLZEN - CANDELA



L max = 250 mm

Notes

Material: 42CrMo4
800±1000 N/mm²



| | | |
|----------------------|-----------------|---------------|
| ORDER EXAMPLE | BMW CODE | L1=185 |
| | 2 175 222 | 185 |
| BMW CODE | | |
| 2 175 222 | | |

RETAINER - SICHERUNGSPLATTE - PIASTRINA



Notes

Material: St37

STOCK



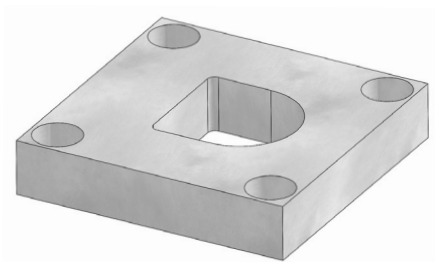
BMW CODE

2 171 716

BMW CODE

2 171 716

RETAINER - SICHERUNGSPLATTE - PIASTRINA



Notes

Material: 90MnCrV8 - **HRC:** 60÷62

STOCK



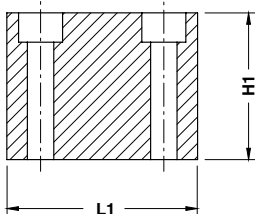
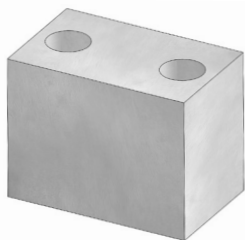
BMW CODE

2 172 935

BMW CODE

2 172 935

STOP BLOCK - ABSTANDSBLOCK - DISTANZIALE



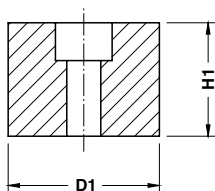
STOCK

| Notes | |
|-----------------------|--|
| Material: St37 | |

| ORDER EXAMPLE | BMW CODE |
|---------------|-----------|
| | 2 175 075 |

| BMW CODE | L1 | H1 |
|-----------|-----|----|
| 2 175 074 | 65 | 30 |
| 2 175 075 | 65 | 50 |
| 2 175 076 | 100 | 30 |
| 2 175 077 | 100 | 50 |
| 2 175 375 | 80 | 30 |
| 2 175 376 | 100 | 30 |

STOP BLOCK - ABSTANDSBLOCK - DISTANZIALE



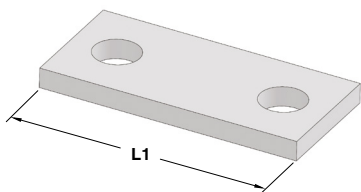
| Notes | |
|-----------------------|--|
| Material: CK45 | |

STOCK

| ORDER EXAMPLE | BMW CODE |
|---------------|-----------|
| | 2 175 079 |

| BMW CODE | D1 | H1 |
|-----------|----|----|
| 2 175 078 | 40 | 30 |
| 2 175 079 | 40 | 50 |

SHIM - ABSTIMMSCHEIBE - SPESSORE



| Notes | |
|-----------------------|--|
| Material: St52 | |

STOCK

| ORDER EXAMPLE | BMW CODE |
|---------------|----------|
| | 6554390 |

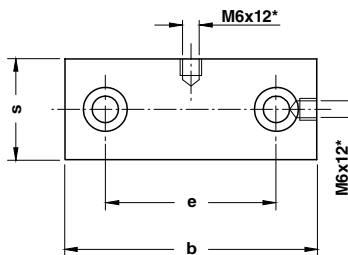
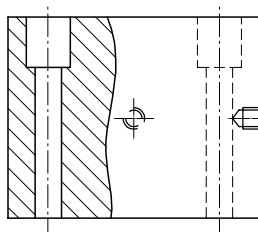
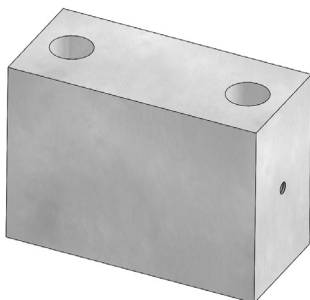
| BMW CODE | L1 |
|----------|-----|
| 6554389 | 65 |
| 6554390 | 100 |

SPACER - DISTANZSTÜCK - DISTANZIALE

Notes

Material: St37

STOCK

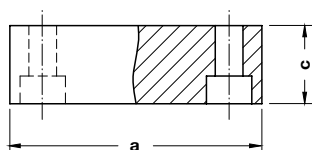
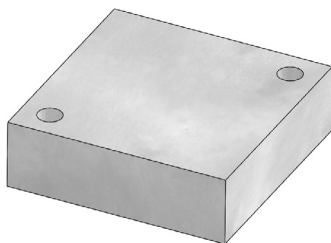


BMW CODE

2 172 065

| BMW CODE | b | e | s | Max load (kN) | BMW CODE *(without thread M6) | b | e | s | Max load (kN) |
|-----------|-----|-----|----|---------------|----------------------------------|-----|-----|----|---------------|
| 2 172 064 | 65 | 35 | 30 | 270 | 2 173 866 | 65 | 35 | 30 | 270 |
| 2 172 065 | 100 | 68 | 40 | 700 | 2 173 867 | 100 | 68 | 40 | 700 |
| 2 168 316 | 160 | 98 | 40 | 1100 | 2 173 868 | 160 | 98 | 40 | 1100 |
| 2 172 066 | 110 | 78 | 50 | 1000 | 2 173 869 | 110 | 78 | 50 | 1000 |
| 2 168 317 | 180 | 114 | 50 | 1600 | 2 173 870 | 180 | 114 | 50 | 1600 |
| 2 172 067 | 130 | 90 | 60 | 1500 | 2 173 871 | 130 | 90 | 60 | 1500 |
| 2 175 145 | 130 | 90 | 60 | 1500 | 2 175 146 | 130 | 90 | 60 | 1500 |
| 2 168 318 | 200 | 130 | 60 | 2300 | 2 173 872 | 200 | 130 | 60 | 2300 |
| 2 174 518 | 200 | 125 | 60 | 2300 | 2 174 519 | 200 | 125 | 60 | 2300 |
| 2 168 319 | 160 | 115 | 80 | 2350 | 2 173 873 | 160 | 115 | 80 | 2350 |
| 2 175 003 | 160 | 115 | 80 | 2350 | 2 175 004 | 160 | 115 | 80 | 2350 |
| 2 168 320 | 250 | 160 | 80 | 3650 | 2 173 874 | 250 | 160 | 80 | 3650 |
| 2 174 520 | 250 | 155 | 80 | 3650 | 2 174 521 | 250 | 155 | 80 | 3650 |

BACKING PLATE - DISTANZKAPPE - REAZIONE PER CILINDRO



Notes

Material: 90MnCrV8 - **HRC:** 49÷52

STOCK



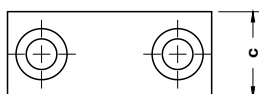
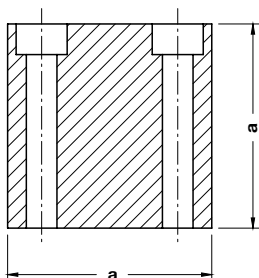
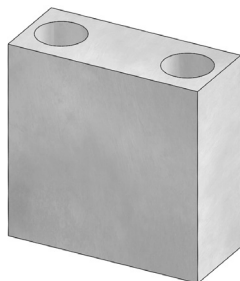
BMW CODE

2 171 494

| BMW CODE | a | c |
|-----------|-----|----|
| 2 171 493 | 60 | 48 |
| 2 171 494 | 60 | 43 |
| 2 171 495 | 70 | 39 |
| 2 171 496 | 100 | 36 |
| 2 171 497 | 100 | 31 |
| 2 172 219 | 60 | 30 |
| 2 172 220 | 60 | 25 |
| 2 172 221 | 70 | 20 |
| 2 172 222 | 100 | 20 |
| 2 172 223 | 100 | 15 |

Standard BMW

BACKING PLATE - DISTANZKAPPE - REAZIONE PER CILINDRO



Notes

Material: 90MnCrV8 - **HRC:** 49÷52

Only for replacement
Nur für Reparatur
Solo per riparazione

STOCK

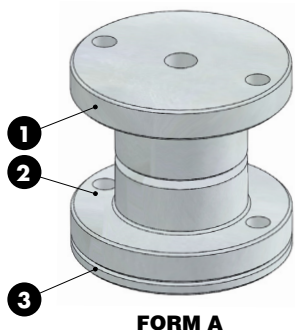


BMW CODE

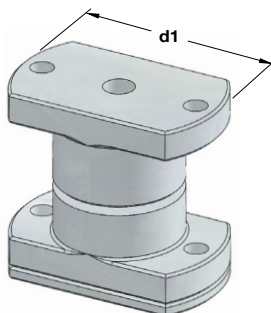
2 173 596

| BMW CODE | Nom. load (daN) | a | c |
|-----------|-----------------|-----|----|
| 2 173 596 | 750÷1500 | 60 | 25 |
| 2 173 597 | 3000 | 70 | 25 |
| 2 173 598 | 5000÷7500 | 100 | 30 |

LOCATING CONE - KEGELDISTANZ - CONO DI CENTRAGGIO



FORM A



FORM B

Notes

1 2

Material: 16MnCr5 - **HRC:** 60÷62

3 Material: CK45

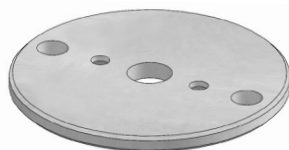


BMW CODE

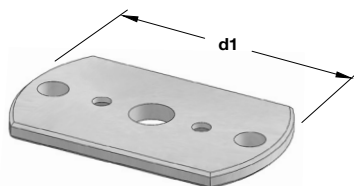
2 171 883

| BMW CODE | d1 | FORM |
|-----------|-----|------|
| 2 171 882 | 100 | A |
| 2 171 883 | 100 | B |
| 2 171 884 | 120 | A |
| 2 171 885 | 120 | B |

SHIM - ABSTIMMSCHEIBE - SPESSORE



FORM A



FORM B

Notes

Material: CK45

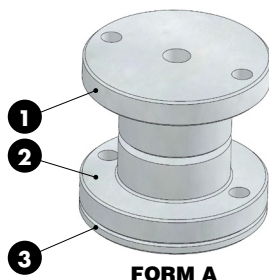


BMW CODE

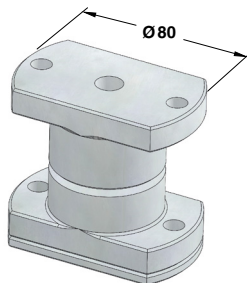
2 171 887

| BMW CODE | d1 | FORM |
|-----------|-----|------|
| 2 171 886 | 100 | A |
| 2 171 887 | 100 | B |
| 2 171 888 | 120 | A |
| 2 171 889 | 120 | B |

LOCATING CONE - KEGELDISTANZ - CONO DI CENTRAGGIO



FORM A



FORM B

Notes

1 2

Material: 16MnCr5 - **HRC:** 60÷62

3 Material: CK45

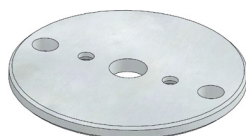


| | |
|-----------------|-----------|
| BMW CODE | 2 173 124 |
|-----------------|-----------|

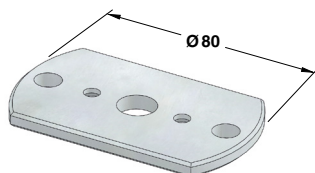
| BMW CODE | FORM |
|-----------|------|
| 2 173 123 | A |
| 2 173 124 | B |

Standard BMW

SHIM - ABSTIMMSCHEIBE - SPESSORE



FORM A



FORM B

Notes

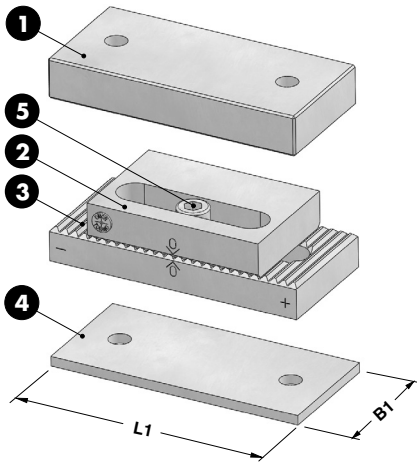
Material: CK45



| | |
|-----------------|-----------|
| BMW CODE | 2 173 126 |
|-----------------|-----------|

| BMW CODE | FORM |
|-----------|------|
| 2 173 125 | A |
| 2 173 126 | B |

SPACER PLATE TOOTHED - DISTANZPLATTE GEZAHNT - TASSELLO DI COMPENSAZIONE



Notes

1 2 3

Material: 90MnCrV8 - **HRC:** 58÷60

4 Material: Si52

5 DIN 912

STOCK



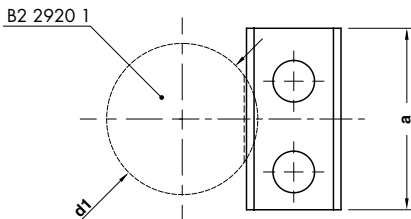
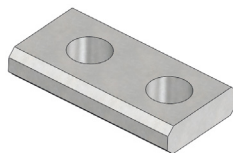
BMW CODE

2 171 715

| BMW CODE | B1 | L1 | * |
|-----------|----|-----|-----|
| 2 171 714 | 60 | 130 | 12a |
| 2 171 715 | 80 | 160 | 13a |

B2 2904 009

RETAINER - SICHERUNGSPLATTE - PIASTRINA



Notes

Material: Si37

STOCK

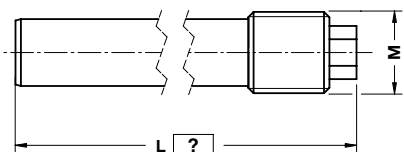
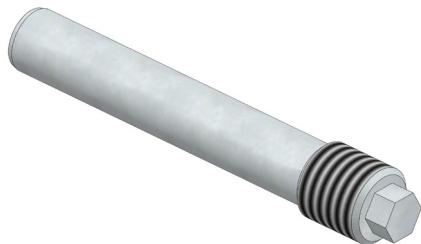


BMW CODE

2 174 517

| BMW CODE | a | d1 |
|-----------|----|-------|
| 2 174 516 | 40 | 25÷32 |
| 2 174 517 | 48 | 40÷50 |

RETAINING BOLT - SICHERUNGSBOLZEN - PERNO DI BLOCCAGGIO



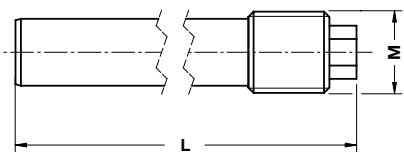
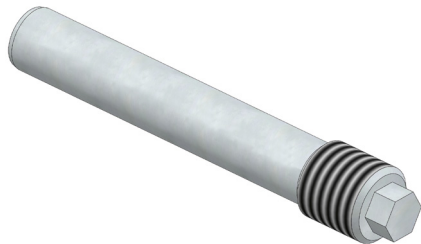
Notes
Material: CK45

10

| | | |
|-----------------|-----------------|--------------|
| ORDER EXAMPLE | BMW CODE | L=240 |
| | 2 174 247 | 240 |
| BMW CODE | L | M |
| 2 174 247 | ≤ 300 | M 30 |

Standard BMW

RETAINING BOLT - SICHERUNGSBOLZEN - PERNO DI BLOCCAGGIO



Notes
Material: CK45

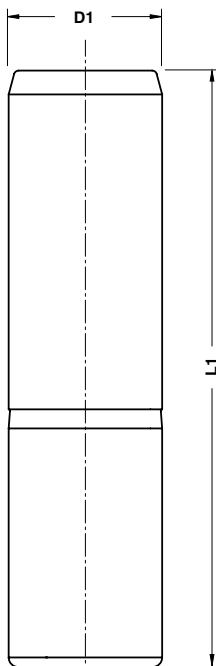
STOCK

| | | | |
|-----------------|-----------------|----------|--|
| ORDER EXAMPLE | BMW CODE | | |
| | 2 174 246 | | |
| BMW CODE | L | M | |
| 2 174 780 | 180 | M 30 | |
| 2 174 246 | 230 | M 30 | |
| 2 175 009 | 200 | M 20 | |

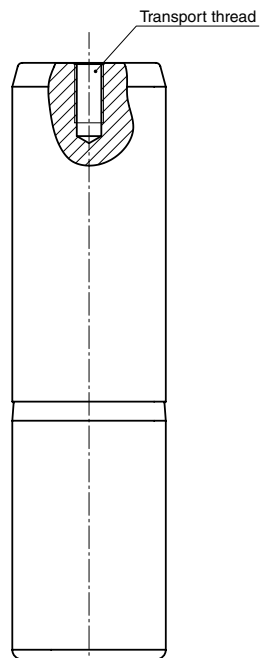
GUIDE POST - FÜHRUNGSSÄULE - COLONNA GUIDA

Notes

Material: 16MnCr5 - HRC 60÷62



FORM A



FORM B

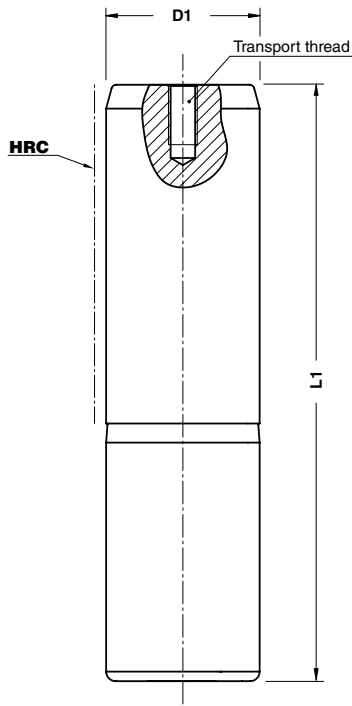
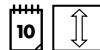
| | |
|--|------------------|
| | BMW CODE |
| | 2 168 678 |

| BMW CODE | D1 | L1 | FORM | BMW CODE | D1 | L1 | FORM |
|-----------|----|-----|------|-----------|----|-----|------|
| 2 168 677 | 63 | 200 | A | 2 168 682 | 80 | 250 | B |
| 2 168 678 | 63 | 250 | A | 2 168 684 | 80 | 280 | B |
| 2 175 085 | 63 | 280 | A | 2 168 686 | 80 | 315 | B |
| 2 168 679 | 63 | 315 | A | 2 168 688 | 80 | 355 | B |
| 2 168 680 | 63 | 355 | A | | | | |

GUIDE POST - FÜHRUNGSSÄULE - COLONNA GUIDA

Notes

Material: 16MnCr5 - HRC 60÷62



Standard BMW

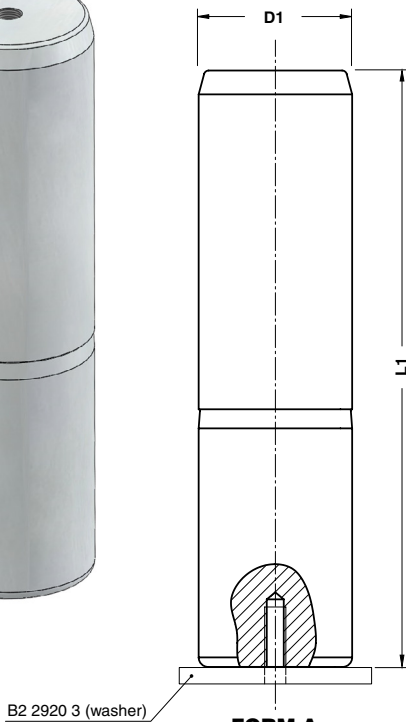
| | |
|--|-----------------|
| | BMW CODE |
| | 2 175 006 |

| BMW CODE | D1 | L1 | BMW CODE | D1 | L1 |
|-----------|-----|-----|-----------|-----|-----|
| 2 175 005 | 80 | 250 | 2 171 214 | 100 | 355 |
| 2 175 006 | 80 | 280 | 2 171 216 | 100 | 400 |
| 2 175 007 | 80 | 315 | 2 171 218 | 125 | 355 |
| 2 175 008 | 80 | 355 | 2 172 239 | 125 | 400 |
| 2 174 777 | 100 | 280 | 2 171 220 | 125 | 450 |
| 2 174 778 | 100 | 315 | | | |

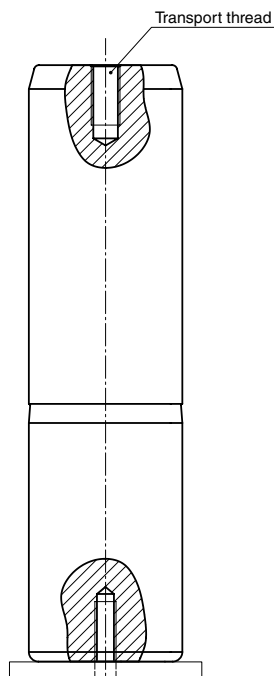
GUIDE POST - FÜHRUNGSSÄULE - COLONNA GUIDA

Notes

Material: 16MnCr5 - HRC 60÷62



FORM A



FORM B



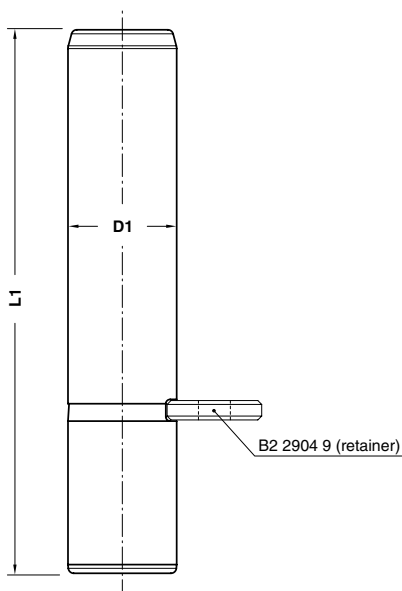
BMW CODE
2 173 907

| BMW CODE | D1 | L1 | FORM | Washer Code | BMW CODE | D1 | L1 | FORM | Washer Code | BMW CODE | D1 | L1 | FORM | Washer Code |
|-----------|----|-----|------|-------------|-----------|----|-----|------|-------------|-----------|----|-----|------|-------------|
| 2 173 906 | 40 | 160 | A | 2173912 | 2 173 914 | 50 | 200 | A | 2173919 | 2 175 086 | 63 | 280 | A | 2173925 |
| 2 173 907 | 40 | 180 | A | 2173912 | 2 173 915 | 50 | 250 | A | 2173919 | 2 173 922 | 63 | 315 | A | 2173925 |
| 2 173 908 | 40 | 200 | A | 2173912 | 2 173 916 | 50 | 280 | A | 2173919 | 2 173 923 | 63 | 355 | A | 2173925 |
| 2 173 909 | 40 | 224 | A | 2173912 | 2 173 917 | 50 | 315 | A | 2173919 | 2 173 926 | 80 | 250 | B | 2 173 930 |
| 2 173 910 | 40 | 250 | A | 2173912 | 2 173 918 | 50 | 355 | A | 2173919 | 2 173 927 | 80 | 280 | B | 2 173 930 |
| 2 173 911 | 40 | 280 | A | 2173912 | 2 173 920 | 63 | 200 | A | 2173925 | 2 173 928 | 80 | 315 | B | 2 173 930 |
| 2 173 913 | 50 | 160 | A | 2173919 | 2 173 921 | 63 | 250 | A | 2173925 | 2 173 929 | 80 | 355 | B | 2 173 930 |

GUIDE POST - FÜHRUNGSSÄULE - COLONNA GUIDA

Notes

Material: 16MnCr5 - HRC 60÷62



Standard BMW



BMW CODE
2 174 493

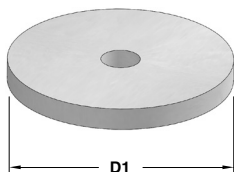
| BMW CODE | D1 | L1 | Retainer Code | BMW CODE | D1 | L1 | Retainer Code | BMW CODE | D1 | L1 | Retainer Code |
|-----------|----|-----|---------------|-----------|----|-----|---------------|-----------|----|-----|---------------|
| 2 174 492 | 25 | 125 | 2 174 516 | 2 174 499 | 40 | 160 | 2 174 517 | 2 174 506 | 50 | 200 | 2 174 517 |
| 2 174 493 | 25 | 140 | 2 174 516 | 2 174 500 | 40 | 180 | 2 174 517 | 2 174 507 | 50 | 250 | 2 174 517 |
| 2 174 494 | 25 | 160 | 2 174 516 | 2 174 501 | 40 | 200 | 2 174 517 | 2 174 508 | 50 | 280 | 2 174 517 |
| 2 174 495 | 25 | 180 | 2 174 516 | 2 174 502 | 40 | 224 | 2 174 517 | 2 174 509 | 50 | 315 | 2 174 517 |
| 2 174 496 | 25 | 200 | 2 174 516 | 2 174 503 | 40 | 250 | 2 174 517 | 2 174 510 | 50 | 355 | 2 174 517 |
| 2 174 497 | 32 | 160 | 2 174 516 | 2 174 504 | 40 | 280 | 2 174 517 | | | | |
| 2 174 498 | 32 | 200 | 2 174 516 | 2 174 505 | 50 | 160 | 2 174 517 | | | | |

WASHER - FEDERSCHEIBE - RONDELLA PER COLONNE

Notes

Material: CK45

STOCK



| | |
|-----------------|-----------------|
| | BMW CODE |
| | 2 173 919 |
| BMW CODE | D1 |
| 2 173 912 | 60 |
| 2 173 919 | 70 |
| 2 173 925 | 83 |
| 2 173 930 | 100 |

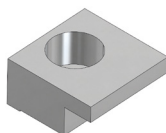
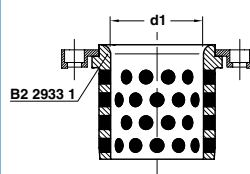
TOE CLAMP - HALTESTÜCK - RITEGNO PER BOCCOLA

STOCK

Notes

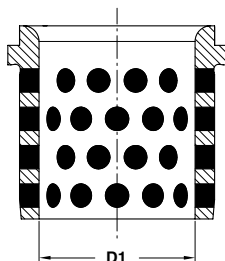
Material: CK45

Application example



| | |
|-----------------|-----------------|
| | BMW CODE |
| | 2 168 842 |
| BMW CODE | d1 |
| 2 168 834 | 25÷50 |
| 2 168 842 | 63÷160 |
| 2 172 560 | 16 |
| 2 172 561 | 20 |

GUIDE BUSH DIN 9834 - FÜHRUNGSBUCHSE DIN 9834 - BOCCOLA DIN 9834



Notes

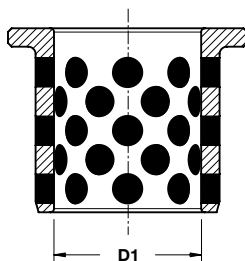
Material: Bronze + Graphite
HB > 190



| | |
|-----------------|-----------------|
| | BMW CODE |
| | 2 168 700 |
| BMW CODE | D1 |
| 2 168 699 | 25 |
| 2 168 700 | 32 |
| 2 168 701 | 40 |
| 2 168 702 | 50 |
| 2 168 703 | 63 |
| 2 168 704 | 80 |
| 2 168 705 | 100 |
| 2 168 706 | 125 |
| 2 168 707 | 160 |

Standard BMW

GUIDE BUSH - FÜHRUNGSBUCHSE - BOCCOLA



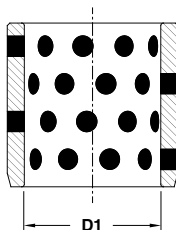
Notes

Material: Bronze + Graphite
HB > 190



| | |
|-----------------|-----------------|
| | BMW CODE |
| | 2 172 557 |
| BMW CODE | D1 |
| 2 172 556 | 16 |
| 2 172 557 | 20 |


GUIDE BUSH - FÜHRUNGSBUCHSE - BOCCOLA



Notes

Material: Bronze + Graphite
HB > 190



| | | |
|---|-----------------|-----------|
|  | BMW CODE | |
| | 2 172 559 | |
| | BMW CODE | D1 |
| | 2 172 558 | 16 |
| | 2 172 559 | 20 |

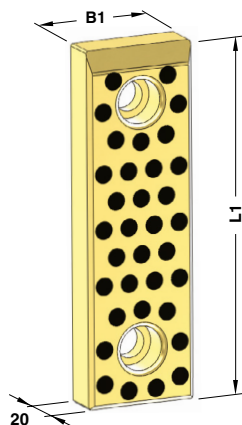
**WEAR PLATE SELF-LUBRICATING VDI 3357
GLEITPLATTE BRONZE MIT FESTSCHMIERSTOFF VDI 3357
PIASTRA GUIDA AUTOLUBRIFICANTE VDI 3357**

Notes

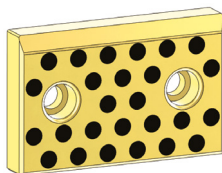
Material: Bronze + Graphite

HB > 190

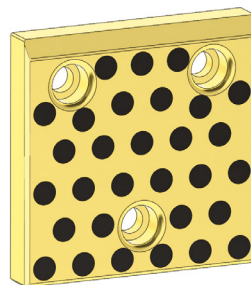
STOCK



FORM A



FORM B



FORM C

20

Standard BMW



BMW CODE
2 168 338

| BMW CODE | B1 | L1 | FORM | BMW CODE | B1 | L1 | FORM |
|-----------|-----|-----|------|-----------|-----|-----|------|
| 2 168 337 | 50 | 80 | A | 2 168 352 | 100 | 160 | B |
| 2 168 338 | 50 | 100 | A | 2 168 353 | 100 | 200 | B |
| 2 168 339 | 50 | 125 | A | 2 168 354 | 125 | 50 | B |
| 2 168 340 | 50 | 160 | A | 2 168 355 | 125 | 80 | B |
| 2 168 341 | 50 | 200 | A | 2 168 356 | 125 | 100 | C |
| 2 168 342 | 80 | 50 | B | 2 168 357 | 125 | 125 | C |
| 2 168 343 | 80 | 80 | A | 2 168 358 | 125 | 160 | C |
| 2 168 344 | 80 | 100 | A | 2 168 359 | 125 | 200 | C |
| 2 168 345 | 80 | 125 | A | 2 168 360 | 160 | 50 | B |
| 2 168 346 | 80 | 160 | A | 2 168 361 | 160 | 80 | B |
| 2 168 347 | 80 | 200 | A | 2 168 362 | 160 | 100 | C |
| 2 168 348 | 100 | 50 | B | 2 168 363 | 160 | 125 | C |
| 2 168 349 | 100 | 80 | B | 2 168 364 | 160 | 160 | C |
| 2 168 350 | 100 | 100 | A | 2 168 365 | 160 | 200 | C |
| 2 168 351 | 100 | 125 | A | | | | |

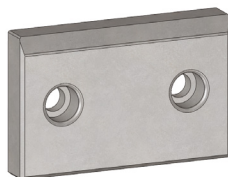
WEAR PLATE STEEL VDI 3357
GLEITPLATTE STAHL VDI 3357
PIASTRA GUIDA IN ACCIAIO VDI 3357

Notes

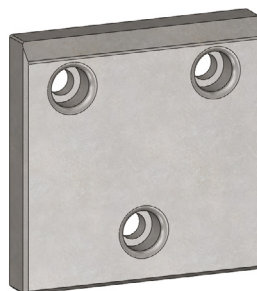
Material: X153CrMoV12 - HRC 58÷60



FORM A



FORM B



FORM C



BMW CODE
2 168 367

| BMW CODE | B1 | L1 | FORM | BMW CODE | B1 | L1 | FORM |
|-----------|-----|-----|------|-----------|-----|-----|------|
| 2 168 366 | 50 | 80 | A | 2 168 381 | 100 | 160 | B |
| 2 168 367 | 50 | 100 | A | 2 168 382 | 100 | 200 | B |
| 2 168 368 | 50 | 125 | A | 2 168 383 | 125 | 50 | B |
| 2 168 369 | 50 | 160 | A | 2 168 384 | 125 | 80 | B |
| 2 168 370 | 50 | 200 | A | 2 168 385 | 125 | 100 | C |
| 2 168 371 | 80 | 50 | B | 2 168 386 | 125 | 125 | C |
| 2 168 372 | 80 | 80 | A | 2 168 387 | 125 | 160 | C |
| 2 168 373 | 80 | 100 | A | 2 168 388 | 125 | 200 | C |
| 2 168 374 | 80 | 125 | A | 2 168 389 | 160 | 50 | B |
| 2 168 375 | 80 | 160 | A | 2 168 390 | 160 | 80 | B |
| 2 168 376 | 80 | 200 | A | 2 168 391 | 160 | 100 | C |
| 2 168 377 | 100 | 50 | B | 2 168 392 | 160 | 125 | C |
| 2 168 378 | 100 | 80 | B | 2 168 393 | 160 | 160 | C |
| 2 168 379 | 100 | 100 | A | 2 168 394 | 160 | 200 | C |
| 2 168 380 | 100 | 125 | A | | | | |

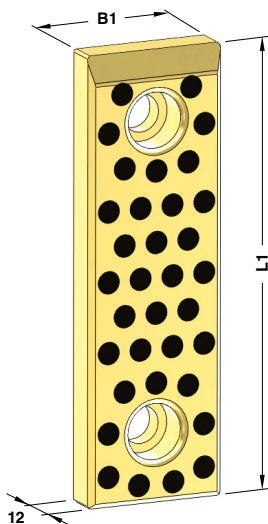
**WEAR PLATE SELF-LUBRICATING VDI 3357
GLEITPLATTE BRONZE MIT FESTSCHMIERSTOFF VDI 3357
PIASTRA GUIDA AUTOLUBRIFICANTE VDI 3357**

Notes

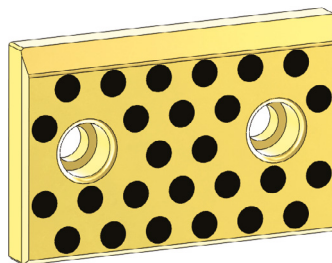
Material: Bronze + Graphite

HB > 190

STOCK



FORM A



FORM B

Standard BMW

| | |
|--|-----------------|
| | BMW CODE |
| | 2 169 172 |

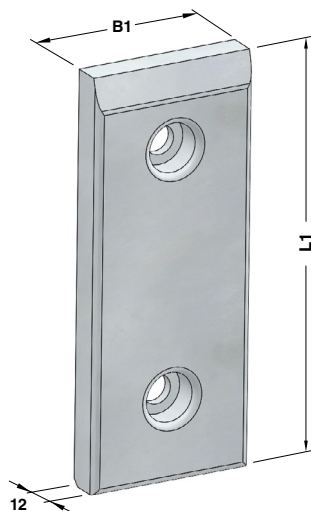
| BMW CODE | B1 | L1 | FORM | BMW CODE | B1 | L1 | FORM |
|-----------|----|-----|------|-----------|----|-----|------|
| 2 169 171 | 30 | 80 | A | 2 169 184 | 50 | 160 | A |
| 2 169 172 | 30 | 100 | A | 2 169 185 | 50 | 200 | A |
| 2 169 173 | 30 | 125 | A | 2 169 186 | 60 | 80 | A |
| 2 169 174 | 30 | 160 | A | 2 169 187 | 60 | 100 | A |
| 2 169 175 | 30 | 200 | A | 2 169 188 | 60 | 125 | A |
| 2 169 176 | 40 | 80 | A | 2 169 189 | 60 | 160 | A |
| 2 169 177 | 40 | 100 | A | 2 169 190 | 60 | 200 | A |
| 2 169 178 | 40 | 125 | A | 2 169 191 | 80 | 80 | A |
| 2 169 179 | 40 | 160 | A | 2 169 192 | 80 | 100 | A |
| 2 169 180 | 40 | 200 | A | 2 169 193 | 80 | 125 | A |
| 2 169 181 | 50 | 80 | A | 2 169 194 | 80 | 160 | A |
| 2 169 182 | 50 | 100 | A | 2 169 195 | 80 | 200 | A |
| 2 169 183 | 50 | 125 | A | 3 007 727 | 80 | 50 | B |

WEAR PLATE STEEL VDI 3357
GLEITPLATTE STAHL VDI 3357
PIASTRA GUIDA IN ACCIAIO VDI 3357

Notes

Material: 16MnCr5 - HRC 58±60

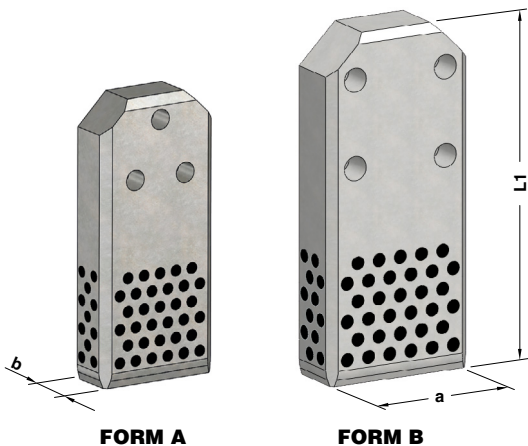
STOCK



| | |
|--|-----------------|
| | BMW CODE |
| | 2 170 889 |

| BMW CODE | B1 | L1 | BMW CODE | B1 | L1 |
|-----------|----|-----|-----------|----|-----|
| 2 170 888 | 30 | 80 | 2 170 901 | 50 | 160 |
| 2 170 889 | 30 | 100 | 2 170 902 | 50 | 200 |
| 2 170 890 | 30 | 125 | 2 170 903 | 60 | 80 |
| 2 170 891 | 30 | 160 | 2 170 904 | 60 | 100 |
| 2 170 892 | 30 | 200 | 2 170 905 | 60 | 125 |
| 2 170 893 | 40 | 80 | 2 170 906 | 60 | 160 |
| 2 170 894 | 40 | 100 | 2 170 907 | 60 | 200 |
| 2 170 895 | 40 | 125 | 2 170 908 | 80 | 80 |
| 2 170 896 | 40 | 160 | 2 170 909 | 80 | 100 |
| 2 170 897 | 40 | 200 | 2 170 910 | 80 | 125 |
| 2 170 898 | 50 | 80 | 2 170 911 | 80 | 160 |
| 2 170 899 | 50 | 100 | 2 170 912 | 80 | 200 |
| 2 170 900 | 50 | 125 | | | |

GIB VDI 3387 - FÜHRUNGLASCHE VDI 3387 - GUIDA VDI 3387



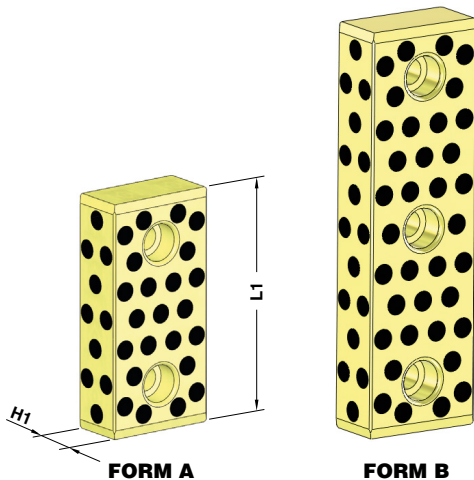
Notes
Material: CK45 + Graphite
HRC: 58÷60
 Only for replacement
 Nur für Reparatur
 Solo per riparazione

STOCK

| | | | | |
|-----------------|-----------------|----------|-----------|-------------|
| | BMW CODE | | | |
| | 2 168 880 | | | |
| BMW CODE | a | b | L1 | FORM |
| 2 168 879 | 112 | 45 | 250 | A |
| 2 168 880 | 140 | 45 | 315 | B |
| 2 168 881 | 190 | 56 | 400 | B |
| 2 174 248 | 240 | 56 | 500 | B |

Standard BMW

GUIDE BAR VDI 3357 - FÜHRUNGSLEISTE VDI 3357 - LARDONE VDI 3357

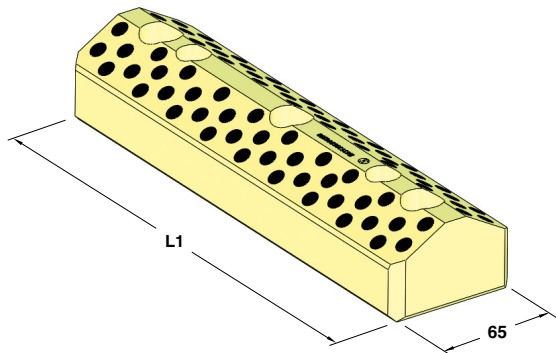


Notes
Material: Bronze + Graphite - HB >190

STOCK

| | | | |
|-----------------|-----------------|-----------|-------------|
| | BMW CODE | | |
| | 2 168 884 | | |
| BMW CODE | H1 | L1 | FORM |
| 2 168 883 | 30 | 125 | A |
| 2 168 884 | 30 | 160 | A |
| 2 168 885 | 30 | 200 | B |
| 2 168 886 | 40 | 125 | A |
| 2 168 887 | 40 | 160 | A |
| 2 168 888 | 40 | 200 | B |

**"V" DRIVER SELF-LUBRICATING VDI 3357
 PRISMENFÜHRUNG BRONZE MIT FESTSCHMIERSTOFF VDI 3357
 GUIDA A "V" AUTOLUBRIFICANTE VDI 3357**

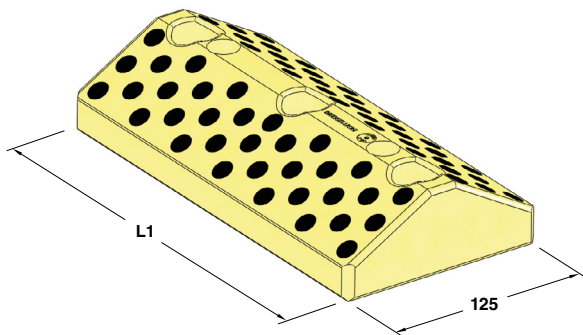


Notes
Material: Bronze + Graphite - **HB** >190

STOCK

| | |
|-----------------|-----------------|
| | BMW CODE |
| | 2 168 900 |
| BMW CODE | L1 |
| 2 168 899 | 150 |
| 2 168 900 | 200 |
| 2 168 901 | 250 |
| 2 168 902 | 300 |

**"V" DRIVER SELF-LUBRICATING VDI 3357
 PRISMENFÜHRUNG BRONZE MIT FESTSCHMIERSTOFF VDI 3357
 GUIDA A "V" AUTOLUBRIFICANTE VDI 3357**

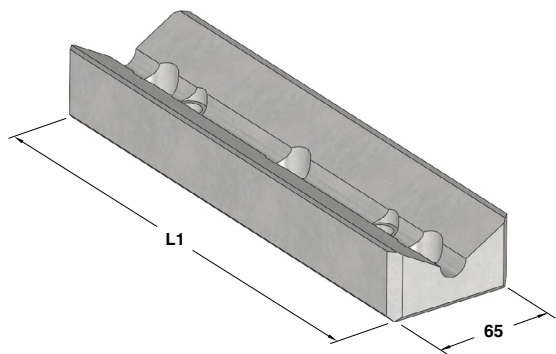


Notes
Material: Bronze + Graphite - **HB** >190

STOCK

| | |
|-----------------|-----------------|
| | BMW CODE |
| | 2 168 904 |
| BMW CODE | L1 |
| 2 168 903 | 150 |
| 2 168 904 | 200 |
| 2 168 905 | 250 |
| 2 168 906 | 300 |

"V" DRIVER VDI 3357 - PRISMENFÜHRUNG VDI 3357 - GUIDA A "V" VDI 3357



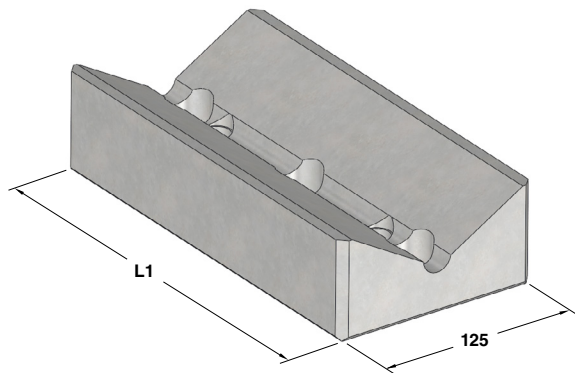
Notes
Material: CK45 - HRC: 58÷60

STOCK

| | |
|-----------------|-----------------|
| | BMW CODE |
| | 2 168 919 |
| BMW CODE | L1 |
| 2 168 918 | 150 |
| 2 168 919 | 200 |
| 2 168 920 | 250 |
| 2 168 921 | 300 |

Standard BMW

"V" DRIVER VDI 3357 - PRISMENFÜHRUNG VDI 3357 - GUIDA A "V" VDI 3357

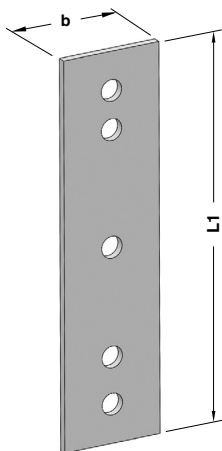


Notes
Material: CK45 - HRC: 58÷60

STOCK

| | |
|-----------------|-----------------|
| | BMW CODE |
| | 2 168 923 |
| BMW CODE | L1 |
| 2 168 922 | 150 |
| 2 168 923 | 200 |
| 2 168 924 | 250 |
| 2 168 925 | 300 |

**DISTANCE PLATE FOR "V" DRIVER
HÖHENAUSGLEICH FÜR PRISMENFUHRUNG
DISTANZIALE PER GUIDA A "V"**



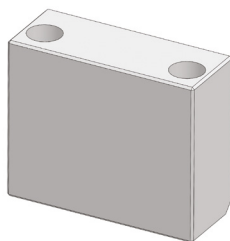
Notes
Material: St52

STOCK

ORDER EXAMPLE **BMW CODE**
2 172 953

| BMW CODE | b | L1 |
|-----------|-----|-----|
| 2 172 952 | 65 | 150 |
| 2 172 953 | 65 | 200 |
| 2 172 954 | 65 | 250 |
| 2 172 955 | 65 | 300 |
| 2 172 956 | 125 | 150 |
| 2 172 957 | 125 | 200 |
| 2 172 958 | 125 | 250 |
| 2 172 959 | 125 | 300 |

SLIDE STOP BLOCK - SCHIEBERRANSCHLAG - ARRESTO SLITTA



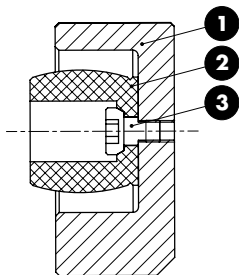
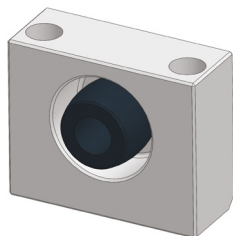
Notes
Material: CK45

STOCK

ORDER EXAMPLE **BMW CODE**
2 175 393

| BMW CODE |
|-----------|
| 2 175 393 |

SLIDE STOP BLOCK - SCHIEBERRANSCHLAG - ARRESTO SLITTA



Notes

- 1** Material: CK45
- 2** Material: CO-Polyester Elastomer
- 3** Screw



| |
|-----------------|
| BMW CODE |
| 2 174 768 |

| |
|-----------------|
| BMW CODE |
| 2 174 768 |

Standard BMW

ANTI-REBOUND ELASTOMER - DÄMPFUNGSELEMENT - AMMORTIZZATORE ANTIRIMBALZO



Notes

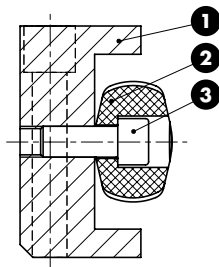
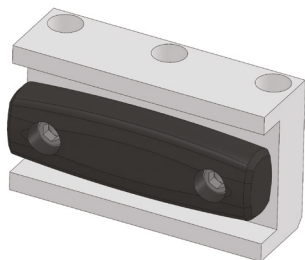
Material: CO-Polyester Elastomer



| |
|-----------------|
| BMW CODE |
| 2 174 767 |

| |
|-----------------|
| BMW CODE |
| 2 174 767 |

SLIDE STOP BLOCK - SCHIEBERRANSCHLAG - ARRESTO SLITTA



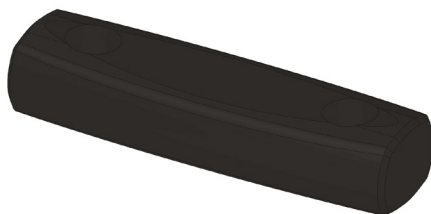
Notes

- 1 Material:** CK45
- 2 Material:** CO-Polyester Elastomer
- 3** M10x30 DIN 912

STOCK

| | |
|-----------|-----------|
| | BMW CODE |
| | 2 174 838 |
| BMW CODE | |
| 2 174 838 | |

ANTI-REBOUND ELASTOMER - DÄMPFUNGSELEMENT - AMMORTIZZATORE ANTIRIMBALZO



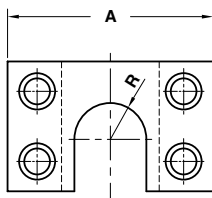
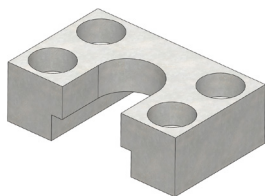
Notes

Material: CO-Polyester Elastomer

STOCK

| | |
|-----------|-----------|
| | BMW CODE |
| | 2 174 837 |
| BMW CODE | |
| 2 174 837 | |

COUPLING PLATE – BEFESTIGUNGSPLATTE - STAFFA DI FISSAGGIO



Notes

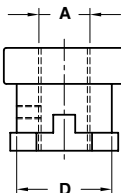
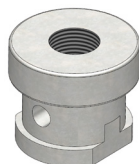
Material: CK45

STOCK

| | | |
|----------------------|-----------------|----------|
| ORDER EXAMPLE | BMW CODE | |
| | 2 175 052 | |
| BMW CODE | A | R |
| 2 175 051 | 100 | 20 |
| 2 175 052 | 120 | 25 |

Standard BMW

COUPLING NUT - KUPPLUNGSMUTTER - AGGANCIAMENTO STAFFA



Notes

Material: CK45

STOCK

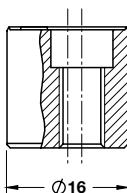
| | | |
|----------------------|-----------------|----------|
| ORDER EXAMPLE | BMW CODE | |
| | 2 175 054 | |
| BMW CODE | A | D |
| 2 175 053 | M16x1,5 | 37 |
| 2 175 054 | M20x1,5 | 37 |
| 2 175 055 | M27x2 | 47 |
| 2 175 056 | M36x2 | 47 |

SHIM - PRÄGESTEMPEL - SPESSORE



| Notes | |
|--------------------------|-----------------|
| Material: St37 | |
| STOCK | |
| ORDER EXAMPLE | BMW CODE |
| | 2 168 546 |
| BMW CODE | |
| 2 168 546 | |

**VISUAL LOCATOR SETTING PUNCH
STEMPEL F. ENTGASUNGSNOPPEN
PUNZONE DI VISUALIZZAZIONE**

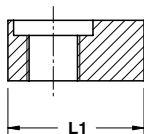


| Notes | |
|--|--|
| Material: X155CrVMo12 - HRC: 55±58 | |
| STOCK | |

| ORDER EXAMPLE | BMW CODE | Option |
|--------------------------|-----------------|---------------|
| | 2 171 527 | U 25 |

| BMW CODE | Option | BMW CODE | Option | BMW CODE | Option |
|-----------------|--------------------|-----------------|--------------------|-----------------|---------------|
| 2 169 003 | 2 digit number | 2 171 529 | B + 2 digit number | 2 173 812 | P + number 3 |
| 2 171 527 | U + 2 digit number | 2 171 530 | 2 digit number | 2 173 813 | P + number 4 |
| 2 171 528 | A + 2 digit number | 2 171 531 | L | 2 173 714 | LP + number 1 |
| 2 175 080 | CN | 2 171 532 | R | 2 173 715 | LP + number 2 |
| 2 171 530 | C | 2 174 593 | - | 2 173 716 | RP + number 1 |
| 2 169 002 | - | 2 173 712 | P + number 1 | 2 173 717 | RP + number 2 |
| 2 171 533 | 2 digit number | 2 173 713 | P + number 2 | | |

KEY - PASSFEDER - CHIAVETTA



Notes

Material: CK45

STOCK



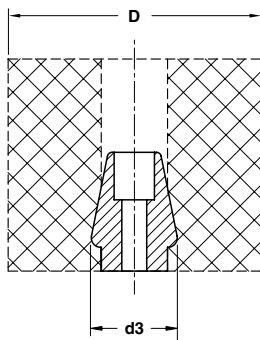
BMW CODE

2 175 929

| BMW CODE | L1 |
|-----------|----|
| 2 175 928 | 16 |
| 2 175 929 | 18 |
| 2 175 930 | 20 |
| 2 175 931 | 22 |
| 2 175 932 | 26 |
| 2 175 933 | 32 |
| 2 175 934 | 35 |
| 2 175 935 | 40 |

Standard BMW

ELASTOMER SPRING PIN - AUFNAHMEBOLZEN - PERNO PER MOLLE



Notes

Material: CK45

Only for replacement
Nur für Reparatur
Solo per riparazione

STOCK

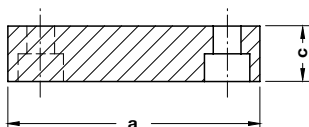
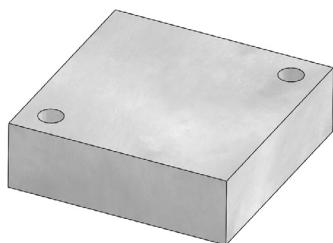


BMW CODE

2 169 345

| BMW CODE | D | d3 |
|-----------|--------|----|
| 2 169 344 | 63 | 28 |
| 2 169 345 | 80-100 | 32 |
| 2 169 346 | 125 | 38 |

BACKING PLATE - DISTANZKAPPE - REAZIONE PER CILINDRO



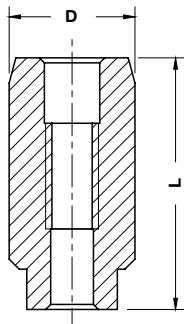
Notes

Material: 90MnCrV8 - **HRC:** 50±52

STOCK

| ORDER EXAMPLE | BMW CODE | |
|---------------|-----------|----|
| | 2 171 499 | |
| BMW CODE | a | c |
| 2 171 498 | 40 | 12 |
| 2 171 499 | 60 | 15 |
| 2 171 500 | 70 | 15 |
| 2 171 501 | 100 | 20 |
| 2 175 147 | 110 | 20 |

LOCATING PIN - ZENTRIERBOLZEN - CENTRAGGIO



Notes

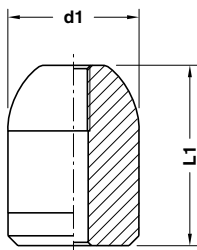
Material: 16MnCr5 - **HRC:** 58±60

Only for replacement
Nur für Reparatur
Solo per riparazione

STOCK

| ORDER EXAMPLE | BMW CODE | |
|---------------|-----------|----|
| | 2 169 053 | |
| BMW CODE | D | L |
| 0 970 435 | 25 | 50 |
| 2 169 053 | 25 | 65 |
| 0 970 413 | 32 | 50 |
| 2 169 054 | 32 | 65 |
| 0 970 412 | 40 | 50 |
| 2 169 055 | 40 | 65 |
| 0 970 411 | 50 | 50 |
| 2 169 056 | 50 | 65 |

LOCATING PIN - ZENTRIERBOLZEN - CENTRAGGIO



Notes

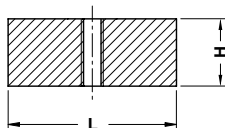
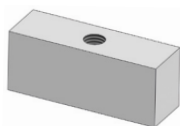
Material: 16MnCr5 - **HRC:** 58÷60

STOCK

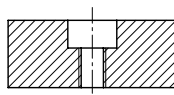
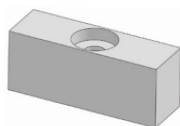
| ORDER EXAMPLE | BMW CODE | |
|---------------|-----------|----|
| | 2 172 411 | |
| BMW CODE | d1 | L1 |
| 2 172 410 | 22 | 45 |
| 2 172 411 | 32 | 50 |
| 2 172 412 | 40 | 55 |
| 2 172 413 | 50 | 55 |
| 2 173 658 | 56 | 80 |

Standard BMW

KEY - PASSFEDER - CHIAVETTA



FORM A



FORM B

Notes

Material: CK45

STOCK

| ORDER EXAMPLE | BMW CODE | FORM | |
|---------------|-----------|------|------|
| | 2 172 224 | A | |
| BMW CODE | H | L | FORM |
| 2 172 053 | 14 | 80 | A |
| 2 172 224 | 30 | 80 | A |
| 2 172 808 | 14 | 50 | A |
| 2 172 809 | 30 | 120 | A |
| 2 174 226 A | 20 | 50 | A |
| 2 174 226 B | 20 | 50 | B |
| 2 174 227 A | 20 | 80 | A |
| 2 174 227 B | 20 | 80 | B |
| 2 174 835 | 10 | 50 | B |
| 2 174 836 | 10 | 80 | B |

LIFTING PIN - TRAGBOLZEN MIT FALLRINGSICHERUNG - PERNO DI SOLLEVAMENTO



Respect the max load
 Maximale Nutzlast beachten
 Rispettare il carico Max

WARNING - ACHTUNG - ATTENZIONE:

For safety reason, please consider always that the weight of the die has to be supported by just 2 lifting pins.

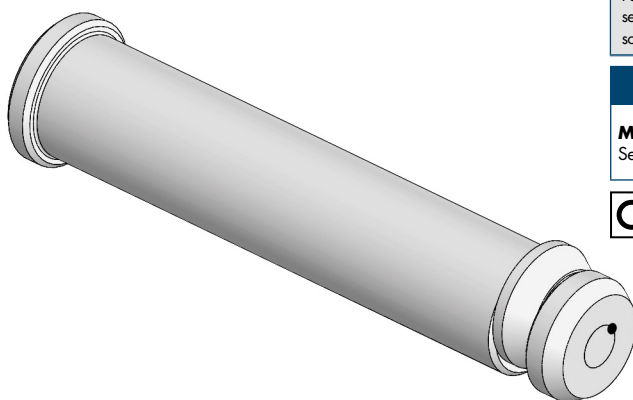
Aus Sicherheitsgründen stets berücksichtigen, dass zwei Tragbolzen das gesamte Werkzeuggewicht tragen müssen.

Per ragioni di sicurezza, considerare sempre che il peso dello stampo deve essere sopportato da 2 soli perni.

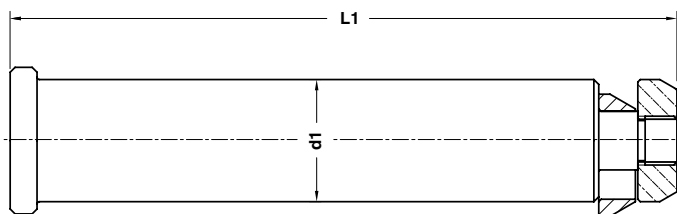
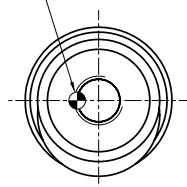
Notes

Material:

See table - siehe Tabelle - vedi tabella



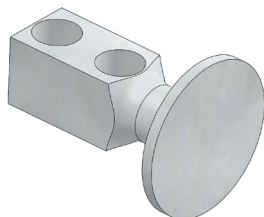
Security Pin



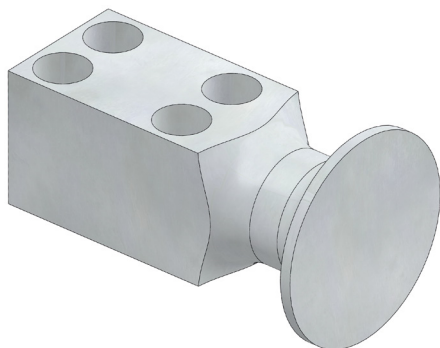
| | |
|--|-----------------|
| | BMW CODE |
| | 2 168 396 |

| BMW CODE | Max load (kg) | Max die weight (kg) | L1 | d1 | Material |
|-----------|---------------|---------------------|-----|----|--------------|
| 2 168 395 | 3200 | 6400 | 175 | 32 | CK45 |
| 2 168 396 | 5000 | 10000 | 225 | 40 | CK45 |
| 2 168 397 | 8000 | 16000 | 273 | 50 | CK45 |
| 2 168 398 | 12500 | 25000 | 347 | 63 | CK45 |
| 2 168 399 | 31500 | 63000 | 422 | 76 | 42CrMo4 + QT |

LIFTING BRACKET WITH ROPE STOP SAFETY
TRAGZAPFEN MIT SEILSICHERUNG
STAFFA DI SOLLEVAMENTO CON SICUREZZA FERMAFUNE



FORM A



FORM B



Respect the max. load
 Maximale Nutzlast beachten
 Rispettare il carico max.

WARNING - ACHTUNG - ATTENZIONE:

For safety reason, please consider always that the weight of the die has to be supported by just 2 lifting brackets.

Aus Sicherheitsgründen stets berücksichtigen, dass zwei Tragzapfens das gesamte Werkzeuggewicht tragen müssen.

Per ragioni di sicurezza, considerare sempre che il peso dello stampo deve essere sopportato da 2 sole staffe.

Notes

Material: CK45 - 700÷800 N/mm²

Screws not included



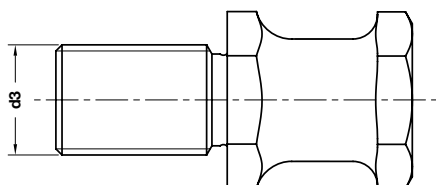
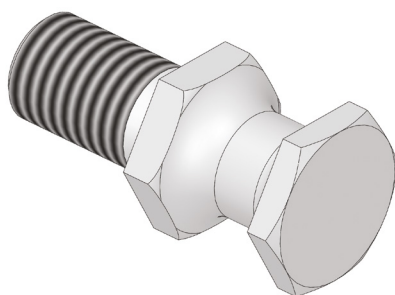
Standard BMW



BMW CODE
3 275 834

| BMW CODE | Max load (kg) | Max die weight (kg) | FORM | BMW CODE | Max load (kg) | Max die weight (kg) | FORM |
|-----------|---------------|---------------------|------|-----------|---------------|---------------------|------|
| 2 169 231 | 320 | 640 | A | 3 275 839 | 5000 | 10000 | A |
| 3 275 834 | 630 | 1260 | A | 3 275 840 | 8000 | 16000 | B |
| 3 275 835 | 1250 | 2500 | A | 2 169 238 | 12500 | 25000 | B |
| 3 275 836 | 2000 | 4000 | A | 2 169 239 | 20000 | 40000 | B |
| 3 275 838 | 3200 | 6400 | A | | | | |

LIFTING PIN VDI 3366
TRAGSCHRAUBE VDI 3366
PERNO DI SOLLEVAMENTO VDI 3366



Respect the max load
 Maximale Nutzlast beachten
 Rispettare il carico Max

WARNING - ACHTUNG - ATTENZIONE:

For safety reason, please consider always that the weight of the die has to be supported by just 2 lifting pins.

Aus Sicherheitsgründen stets berücksichtigen, dass zwei Tragbolzen das gesamte Werkzeuggewicht tragen müssen.

Per ragioni di sicurezza, considerare sempre che il peso dello stampo deve essere sopportato da 2 soli perni.

Notes

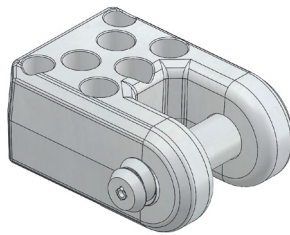
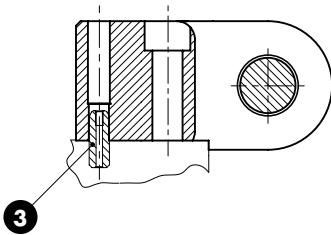
Material: CK45 - 700÷800 N/mm²



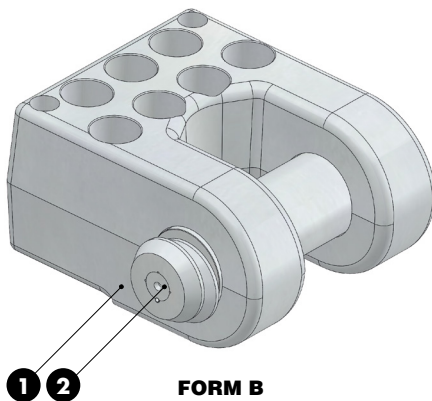
| | |
|--|-----------------|
| | BMW CODE |
| | 2 172 289 |

| BMW CODE | Max load (kg) | Max die weight (kg) | d3 |
|-----------|---------------|---------------------|-----|
| 2 172 288 | 320 | 640 | M16 |
| 2 172 289 | 500 | 1000 | M20 |

LIFTING BRACKET WITH PIN AND LOCATING PINS
TRAGWANGE MIT TRAGBOLZEN UND ZENTRIERBOLZEN
STAFFA DI SOLLEVAMENTO COMPLETA DI PERNO E CENTRAGGI



FORM A



FORM B



Respect the max load
 Maximale Nutzlast beachten
 Rispettare il carico Max

WARNING - ACHTUNG - ATTENZIONE:
 For safety reason, please consider always that the weight of the die has to be supported by just 2 lifting brackets.

Aus Sicherheitsgründen stets berücksichtigen, dass zwei Tragwagen das gesamte Werkzeuggewicht tragen müssen.

Per ragioni di sicurezza, considerare sempre che il peso dello stampo deve essere sopportato da 2 sole staffe.

Notes

- 1** Material: St52
- 2** Material: CK45
- 3** B2 4068 2
 Material: 16MnCr5 - HRC: 58÷60

Screws not included



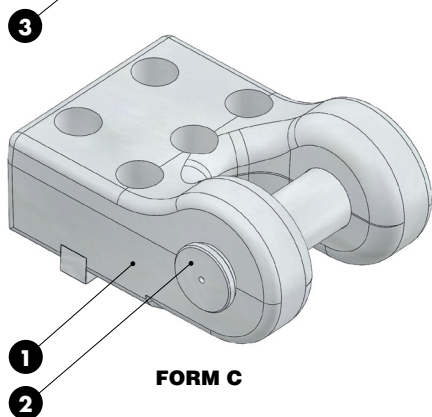
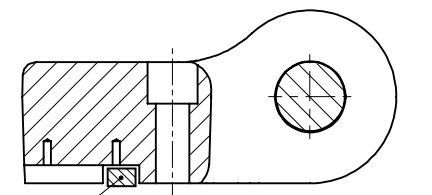
Standard BMW



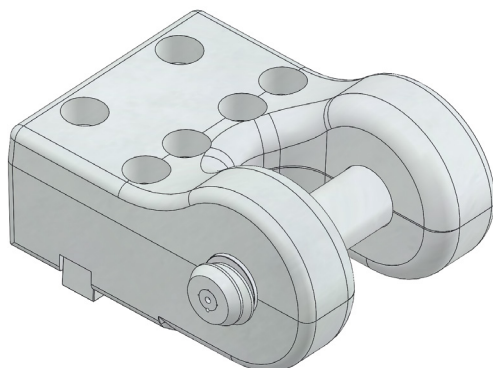
| |
|-----------------|
| BMW CODE |
| 2 174 861 |

| BMW CODE | Max load (kg) | Max die weight (kg) | FORM | BMW CODE | Max load (kg) | Max die weight (kg) | FORM |
|-----------|---------------|---------------------|------|-----------|---------------|---------------------|------|
| 2 174 690 | 3200 | 6400 | A | 2 175 233 | 12500 | 25000 | A |
| 2 174 861 | 5000 | 10000 | A | 2 174 694 | 18000 | 36000 | B |
| 2 174 692 | 8000 | 16000 | A | | | | |

LIFTING BRACKET WITH PIN AND KEYS TRAGWANGE MIT TRAGBOLZEN UND PASSFEDER STAFFA DI SOLLEVAMENTO COMPLETA DI PERNO E CHIAVETTE



FORM C



FORM D



Respect the max load
Maximale Nutzlast beachten
Rispettare il carico Max

WARNING - ACHTUNG - ATTENZIONE:
For safety reason, please consider always that the weight of the die has to be supported by just 2 lifting brackets.

Aus Sicherheitsgründen stets berücksichtigen, dass zwei Tragwagen das gesamte Werkzeuggewicht tragen müssen.

Per ragioni di sicurezza, considerare sempre che il peso dello stampo deve essere sopportato da 2 sole staffe.

Notes

- 1** Material: St52
- 2** Material: CK45 - **FORM C**
- 2** Material: 42CrMo4 - **FORM D**
- 3** C14.20 - Material: CK45

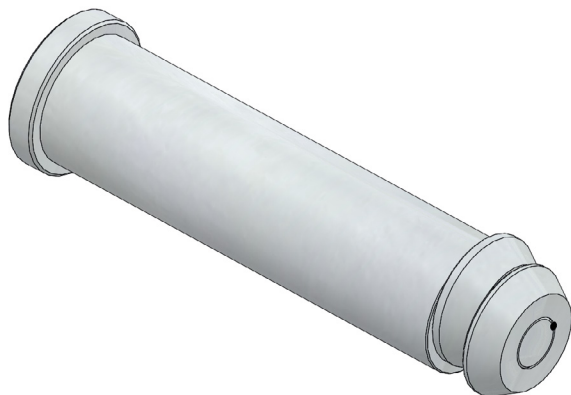
Screws not included



| | |
|--|-----------------|
| | BMW CODE |
| | 2 174 864 |

| BMW CODE | Max load (kg) | Max die weight (kg) | FORM |
|-----------|---------------|---------------------|------|
| 2 174 863 | 25000 | 50000 | C |
| 2 174 864 | 31500 | 63000 | D |

REPLACEMENT LIFTING PIN FOR LIFTING BRACKET BMW ERSATZTRAGBOLZEN FÜR TRAGWANGE BMW PERNO DI RICAMBIO PER STAFFA DI SOLLEVAMENTO BMW



Respect the max load
Maximale Nutzlast beachten
Rispettare il carico Max

WARNING - ACHTUNG - ATTENZIONE:

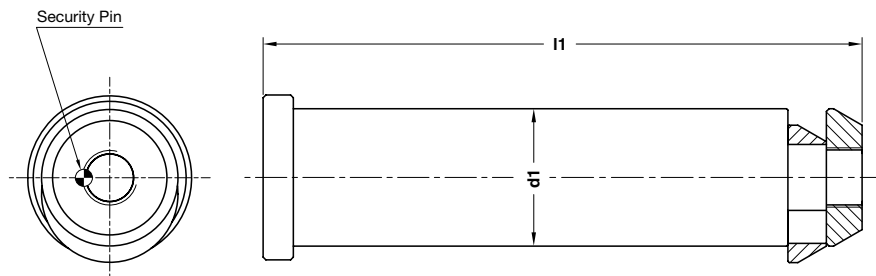
For safety reason, please consider always that the weight of the die has to be supported by just 2 lifting pins.

Aus Sicherheitsgründen stets berücksichtigen, dass zwei Tragbolzen das gesamte Werkzeuggewicht tragen müssen.

Per ragioni di sicurezza, considerare sempre che il peso dello stampo deve essere sopportato da 2 soli perni.



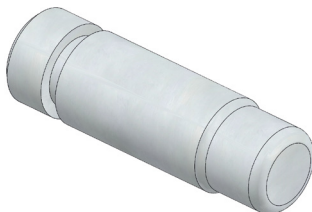
Standard BMW



| | |
|--|-----------------|
| | BMW CODE |
| | 2 174 867 |

| BMW CODE | Max load (kg) | Max die weight (kg) | l1 | d1 | Material |
|-----------|---------------|---------------------|-----|----|--------------|
| 2 168 400 | 3200 | 6400 | 158 | 30 | CK45 |
| 2 174 867 | 5000 | 10000 | 187 | 40 | CK45 |
| 2 168 402 | 8000 | 16000 | 220 | 50 | CK45 |
| 2 174 868 | 12500 | 25000 | 246 | 60 | CK45 |
| 2 168 404 | 18000 | 36000 | 305 | 80 | CK45 |
| 2 174 865 | 25000 | 50000 | 360 | 80 | CK45 |
| 2 174 866 | 31500 | 63000 | 405 | 80 | 42CrMo4 + QT |

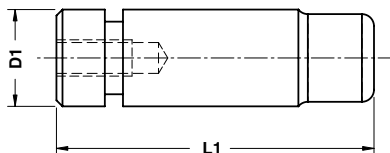
PAD RETAINER PIN - STECKBOLZEN - PERNO DI ARRESTO



Notes

Material: 42CrMo4
800±1000 N/mm²

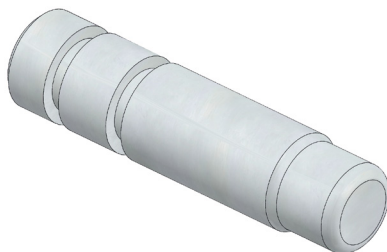
STOCK



BMW CODE
2 173 660

| BMW CODE | D1 | L1 | BMW CODE | D1 | L1 |
|-----------|----|-----|-----------|----|-----|
| 2 173 659 | 32 | 111 | 2 173 663 | 32 | 128 |
| 2 173 660 | 40 | 145 | 2 173 664 | 40 | 165 |
| 2 173 661 | 50 | 171 | 2 173 665 | 50 | 196 |
| 2 173 662 | 63 | 206 | 2 173 666 | 63 | 241 |

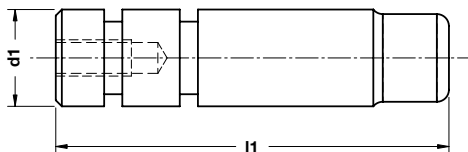
PAD RETAINER PIN - STECKBOLZEN - PERNO DI ARRESTO



Notes

Material: 42CrMo4
Only for replacement
Nur für Reparatur
Solo per riparazione

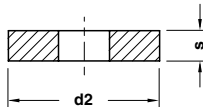
STOCK



BMW CODE
2 173 668

| BMW CODE | d1 | l1 | BMW CODE | d1 | l1 |
|-----------|----|-----|-----------|----|-----|
| 2 173 667 | 32 | 136 | 2 173 671 | 32 | 153 |
| 2 173 668 | 40 | 177 | 2 173 672 | 40 | 197 |
| 2 173 669 | 50 | 211 | 2 173 673 | 50 | 236 |
| 2 173 670 | 63 | 256 | 2 173 674 | 63 | 291 |

WASHER - SCHEIBE - RONDELLA



STOCK

Notes

Material: CK45 - HRC: 45÷50



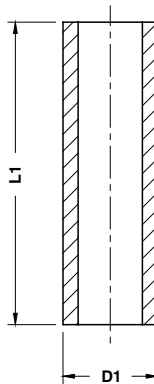
BMW CODE

0 281 619

| BMW CODE | d2 | s |
|------------------|----|----|
| 0 281 618 | 56 | 10 |
| 0 281 619 | 42 | 8 |
| 0 281 620 | 35 | 6 |
| 2 171 891 | 68 | 10 |

B2 6201 012

SPACER TUBE - DISTANZBUCHSE - TUBO DISTANZIALE



Notes

Material: St37 - HRC: 60÷64

Delivery time
Lieferzeit in Werktagen
Tempi di spedizione



STOCK = ●

10 = ○

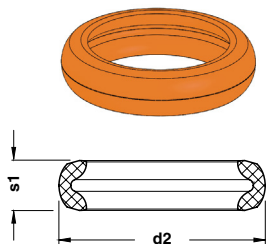


BMW CODE

2 168 800

| BMW CODE | D1 | L1 | Delivery Time | BMW CODE | D1 | L1 | Delivery Time | BMW CODE | D1 | L1 | Delivery Time | BMW CODE | D1 | L1 | Delivery Time |
|------------------|----|-----|---------------|------------------|----|-----|---------------|------------------|----|------|---------------|------------------|----|------|---------------|
| 0 266 957 | 16 | 125 | ● | 2 168 816 | 25 | 80 | ● | 2 168 830 | 36 | 150 | ● | 2 173 792 | 16 | <200 | ○ |
| 2 168 802 | 16 | 50 | ● | 2 168 817 | 25 | 100 | ● | 2 168 831 | 36 | 200 | ● | 2 173 793 | 20 | <200 | ○ |
| 2 168 803 | 16 | 63 | ● | 2 168 818 | 25 | 125 | ● | 2 168 832 | 42 | 150 | ● | 2 173 794 | 25 | <200 | ○ |
| 2 168 804 | 16 | 80 | ● | 2 168 819 | 25 | 200 | ● | 2 168 833 | 42 | 200 | ● | 2 173 795 | 30 | <200 | ○ |
| 2 168 807 | 16 | 200 | ● | 2 168 820 | 30 | 50 | ● | 2 171 893 | 16 | >200 | ○ | 2 173 796 | 36 | <200 | ○ |
| 2 168 808 | 20 | 50 | ● | 2 168 821 | 30 | 63 | ● | 2 171 894 | 20 | >200 | ○ | 2 173 797 | 42 | <200 | ○ |
| 2 168 809 | 20 | 63 | ● | 2 168 822 | 30 | 80 | ● | 2 171 895 | 25 | 150 | ● | 3 021 663 | 16 | 100 | ● |
| 2 168 811 | 20 | 100 | ● | 2 168 823 | 30 | 100 | ● | 2 171 896 | 25 | >200 | ○ | 3 021 664 | 36 | 100 | ● |
| 2 168 812 | 20 | 125 | ● | 2 168 824 | 30 | 125 | ● | 2 171 897 | 30 | >200 | ○ | 3 021 666 | 20 | 80 | ● |
| 2 168 813 | 20 | 200 | ● | 2 168 825 | 30 | 150 | ● | 2 171 898 | 36 | >200 | ○ | | | | |
| 2 168 814 | 25 | 50 | ● | 2 168 826 | 30 | 200 | ● | 2 171 899 | 42 | >200 | ○ | | | | |
| 2 168 815 | 25 | 63 | ● | 2 168 829 | 36 | 125 | ● | 2 172 153 | 36 | 80 | ● | | | | |

BUFFER - STOSSDÄMPFER - AMMORTIZZATORE



STOCK

Notes

Material: CO-Polyester Elastomer

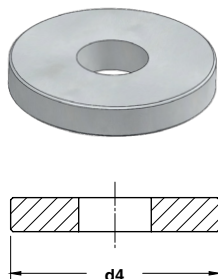


BMW CODE

2 173 881

| BMW CODE | d2 | s1 | Shore | Max load (kN) |
|-----------|------|------|-------|---------------|
| 2 173 880 | 26,2 | 7,7 | 55D | 5500 |
| 2 173 881 | 32,1 | 10,8 | 72D | 9000 |
| 2 173 882 | 46,3 | 17,7 | 72D | 20000 |
| 2 173 883 | 54,6 | 21,6 | 55D | 30000 |
| 2 173 884 | 61,8 | 21,5 | 55D | 46000 |
| 2 173 885 | 78,2 | 30 | 55D | 75000 |

WASHER - SCHEIBE - RONDELLA



STOCK

Notes

Material: CK45

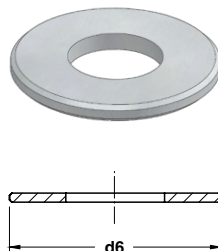


BMW CODE

2 175 382

| BMW CODE | d4 |
|-----------|----|
| 2 175 381 | 30 |
| 2 175 382 | 35 |
| 2 175 383 | 50 |
| 2 175 384 | 65 |
| 2 175 385 | 70 |
| 2 175 386 | 90 |

WASHER - SCHEIBE - RONDELLA



STOCK

Notes

Material: 90MnCrV8 - HRC: 56

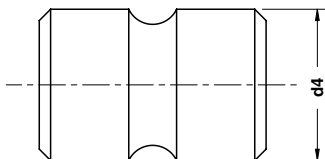


BMW CODE

2 175 388

| BMW CODE | d6 |
|-----------|----|
| 2 175 387 | 30 |
| 2 175 388 | 35 |
| 2 175 389 | 50 |
| 2 175 390 | 65 |
| 2 175 391 | 70 |
| 2 175 392 | 90 |

SHOCK ABSORBER - HALTEELEMENT - AMMORTIZZATORE



Notes

Material: CO-Polyester Elastomer

STOCK



| |
|------------------|
| BMW CODE |
| 2 173 698 |

| BMW CODE | d4 |
|-----------|----|
| 2 173 697 | 40 |
| 2 173 698 | 50 |
| 2 173 699 | 63 |
| 2 173 700 | 80 |

Standard BMW

